

**KBT**
**698~960/1710~2700/3300~3800MHz 80°/60°/65°  
6/8/8dBi ±45° MIMO Directional Panel Antenna**
**TDJ-XX0738BJB-C****Application**

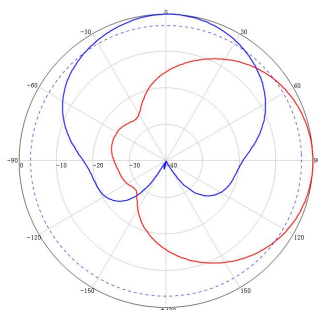
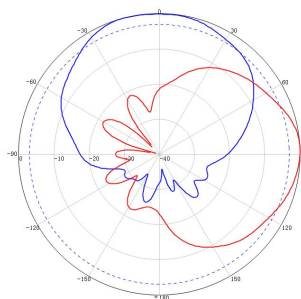
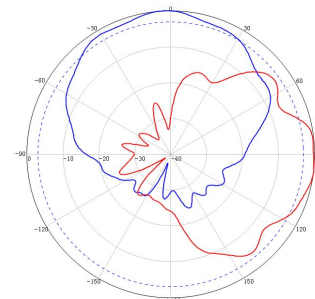
Used in 2G/3G/4G/5G/WLAN system

**Electrical specifications**

Frequency range (MHz)	698~960	1710~2700	3300~3800
Polarization	±45°		
Gain (dBi)	6±1	8±1	8±1
Horizontal beam width (°)	80±15	60±15	65±15
Vertical beam width (°)	75	55	40
Front-to-back ratio (dB)	≥20	≥25	≥20
Cross-polar discrimination (dB)	/		
Isolation (dB)	≥18	≥20	≥25
Impedance (Ω)	50		
VSWR	≤1.8		
Intermodulation IM3 (2×43dBm carrier)	≤-150 dBc		
Maximum power (W)	50		
Lighting protection	DC Ground		

**Mechanical specifications**

Connector	4*4.3-10 Female or 4* N-Female
Connector position	Bottom
Exposed cable size (cm)	30(or customer requirement)
Height/width/depth (mm)	410*305*84
Packing size (mm)	480*370*180
Weight (kg)	2
Radome material	ABS
Radome color	White (RAL9003)
Operating temperature (°C)	-40~60
Application	Indoor
Mounting	Wall Mounting

**698~960MHz: ±45° Pol.****1710~2700MHz: ±45° Pol.****3300~3800MHz: ±45° Pol.**

Kenbotong reserves the right to change specifications without prior notice.

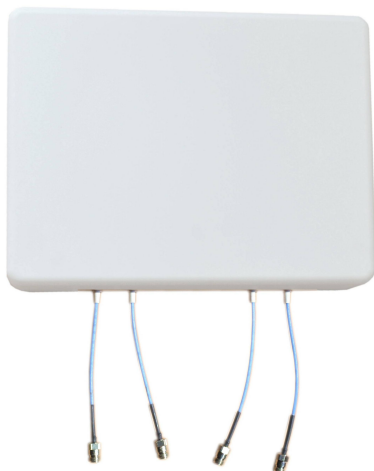
No.2 ChanxiuRoad, Foshan, Guangdong, China. 528061 Tel: +86-757-82219788 Fax: +86-757-82212072

Email: kbt@kenbotong.com Web: http://www.kenbotong.com

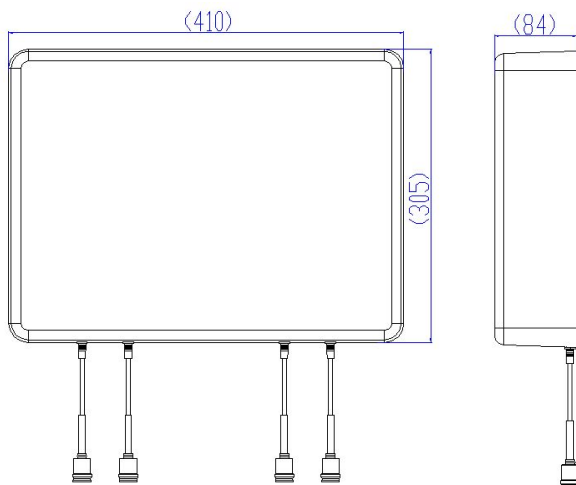


698~960/1710~2700/3300~3800MHz 80°/60°/65°  
6/8/8dBi ±45° MIMO Directional Panel Antenna

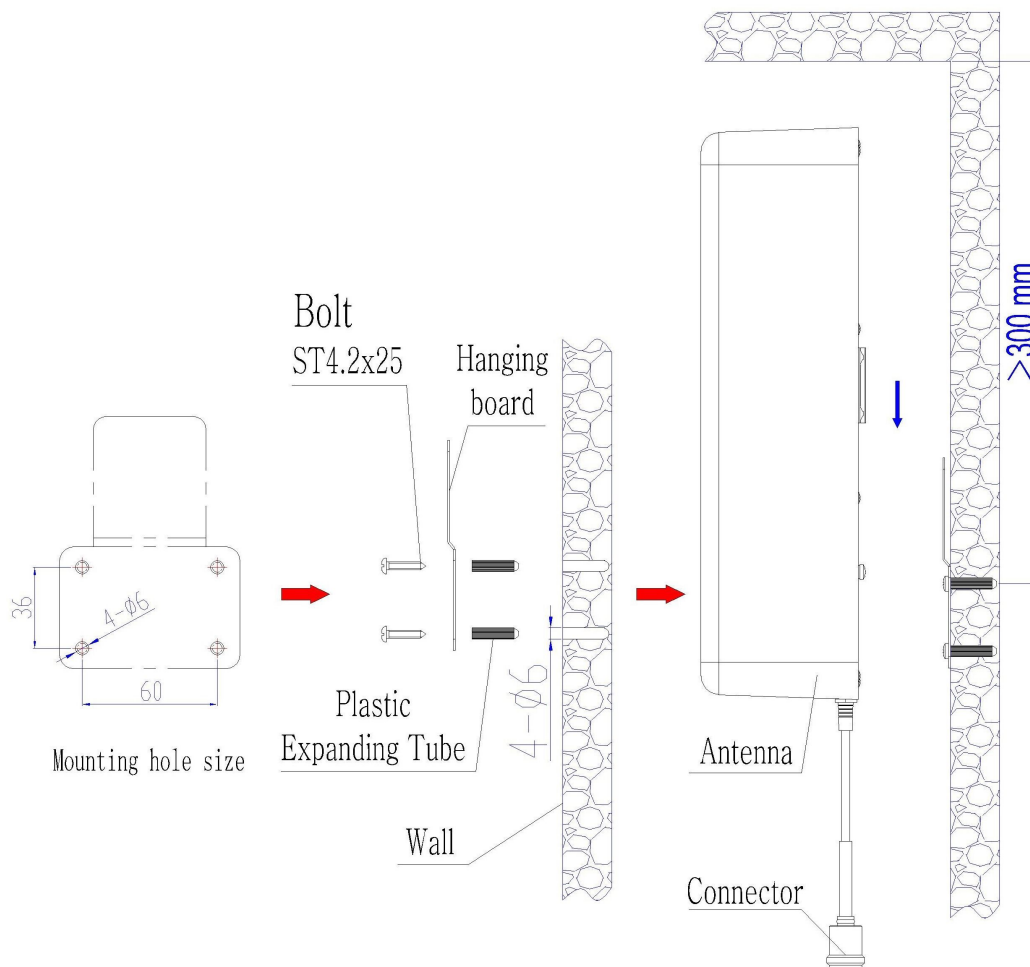
Product pictures



Product size



## Installation Sketch



- 1、 Position and fix the mounting plate onto the wall with the countersunk self-tapping screws M4.2×25 and plastic accessories.
- 2、 Finish the installation by matching the clamp piece on the antenna base plate to the mounting plate hanger.

Kenbotong reserves the right to change specifications without prior notice.

No.2 ChanxiuRoad, Foshan, Guangdong, China. 528061 Tel: +86-757-82219788 Fax: +86-757-82212072

Email: kbt@kenbotong.com Web: <http://www.kenbotong.com>